



MONTHLY MEMBERSHIP PROGRESS REPORT

District 11 E2

Results as of: 06/30/2019

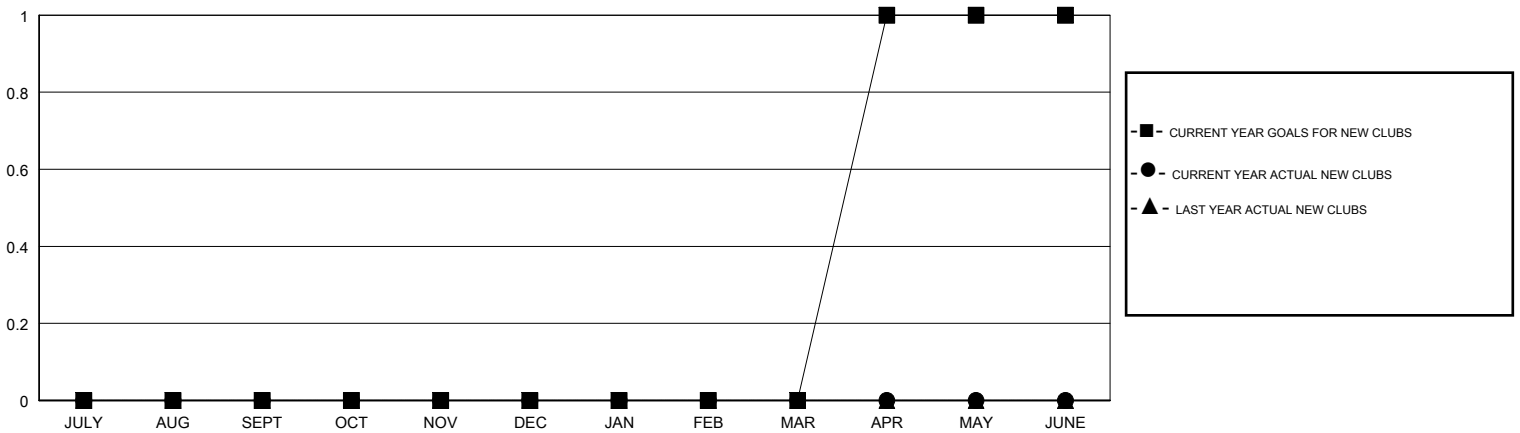
GMT: STEVE ANTON

LOCATION MICHIGAN

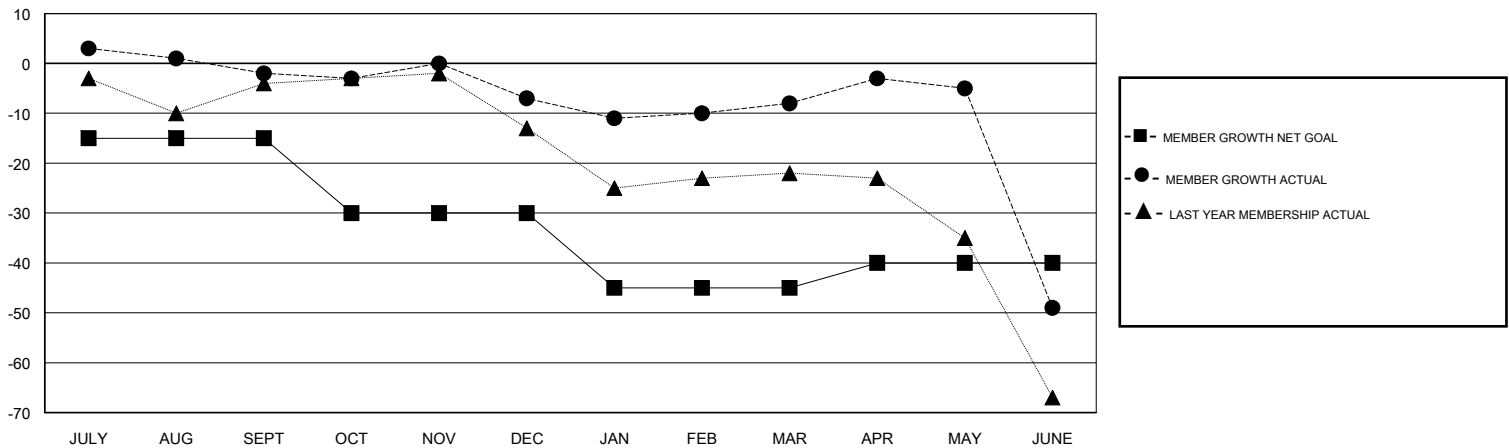
GMT CA

Clubs				Members			
RESULTS FOR 2018-2019				RESULTS FOR 2018-2019			
QUARTER	NEW CLUB GOAL	NEW CLUBS	DROPPED CLUBS	QUARTER	MEMBER GROWTH NET GOAL	MEMBER GROWTH ACTUAL	DROPPED MEMBERS ACTUAL (including transfers)
JULY/AUG/SEPT	0	0	0	JULY/AUG/SEPT	-15	23	22
OCT/NOV/DEC	0	0	0	OCT/NOV/DEC	-15	16	20
JAN/FEB/MAR	0	0	0	JAN/FEB/MAR	-15	13	13
APR/MAY/JUNE	1	0	0	APR/MAY/JUNE	5	26	64

GOALS AND ACTUAL NEW CLUBS CUMULATIVE



GOALS AND ACTUAL MEMBERS CUMULATIVE



DROPPED CLUBS: 0	24 CLUBS OF 32 ADDED 1 OR MORE NEW MEMBERS	<u>GENDER DISTRIBUTION</u> MALE 589 (71.57%) FEMALE 234 (28.43%) Women Percentage Fiscal Year Goal: 30%
<u>DROPPED MEMBERS</u> DECEASED 15 CLUB CANCELLED 0 OTHER 104 TOTAL 119	CLICK HERE FOR CUMULATIVE MEMBERSHIP DATA	TOTAL FAMILY UNIT MEMBERS 107 FAMILY MEMBERS PAYING HALF DUES 54